

CERTIFICATE OF LOCATION OF GOVERNMENT CORNER

EAST QUARTER Corner of Section 22, Township 105 N., Range 42 W., 5 th P.M.

STATE OF MINNESOTA, County of MURRAY

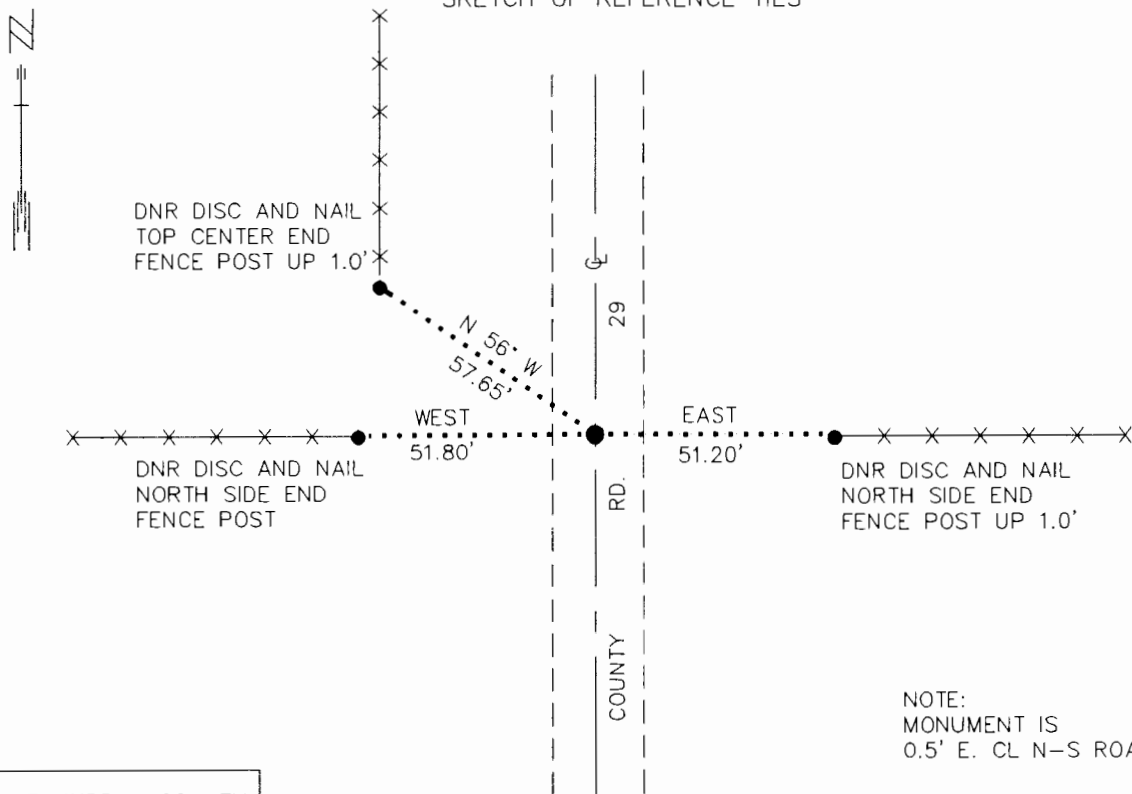
At the corner location shown on the sketch:

On 9/14/92 found a 1/2" IRON ROD, FLUSH
DATE

left monument as found, lowered monument, removed monument (explain)

On _____ Placed a _____
DATE

SKETCH OF REFERENCE TIES



NOTE:
MONUMENT IS
0.5' E. CL N-S ROAD

1983 MURRAY COUNTY
COORDINATE SYSTEM

N = 113362.451
E = 474365.541

BEARINGS OBSERVED WITH COMPASS

Statement of evidence relative to this corner location is on back of page.

10/7/92
WMA01187.00.00.01

I hereby certify that this document and the data contained herein was prepared by me or under my direct supervision.

Lowell R. Pomeroy 10-26-92
SIGNATURE DATE

Registration No. 17005

- Land Surveyor, Professional Engineer
- County Surveyor, County Engineer

OFFICE OF THE COUNTY RECORDER

County of MURRAY

I hereby certify that this document was filed in the Co. recorders office at _____ .M. on the _____ day of OCT 27 1992 A.D., 19__

County Recorder *Jamaal V. Johnson*
By _____, Deputy

DOCUMENT NO. _____

East Quarter Corner Section 22, Township 105 North, Range 42 West

The DNR Bureau of Engineering contacted the following offices for information on this corner:

MN Secretary of State
Murray County Recorder and Highway Engineer
Moseng Land Surveying at Marshall
Madsen Land Surveying at Fairmont

1861 The U.S. General Land Office notes, on file in the Secretary of State's Office, show the corner marked with a post, made mound with trench and pits as per instructions.

1931 Surveyor's Record Book A, on file in the County Recorder's Office, on page 353, contains a survey that states; "Stone fence cor. 31.0 west on line". The corner is shown to measure:

2629 ft. from the northeast corner Section 22
2657.6 ft. from the southeast corner Section 22

This information is also on file in the County Highway Engineer's Office.

1931 Surveyor's Record Book A, on file in the County Recorder's Office, on page 372, contains a survey that states; "See Sec 23".

This information is also on file in the County Highway Engineer's Office.

1971 An old record book, on file in the County Highway Engineer's Office, states placed a bridge spike over a 2 x 2 hub. Three reference ties are shown.

1971 A large book of corner ties, on file in the County Highway Engineer's Office, describes the corner as a 2 x 2 hub, down 1.5 ft, likely an assumed corner for grading alignment, Year 1953. Placed a 1.3' x 3/4" bridge spike over the hub, and took three reference ties.

1992 September 14, the DNR Bureau of Engineering conducted a search for the corner and found a 1/2 rebar, flush in County Road 29. Searched for, but did not find the reference ties of record. Iron rod was found to measure:

2629.27 ft. from the northeast corner Section 22
2658.17 ft. from the southeast corner Section 22

Analysis of the available information led the DNR Bureau of Engineering to conclude that the found iron rod marks the location of the corner.